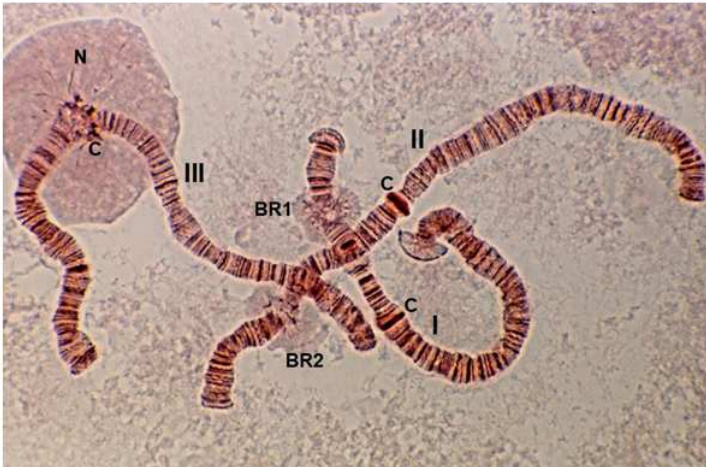


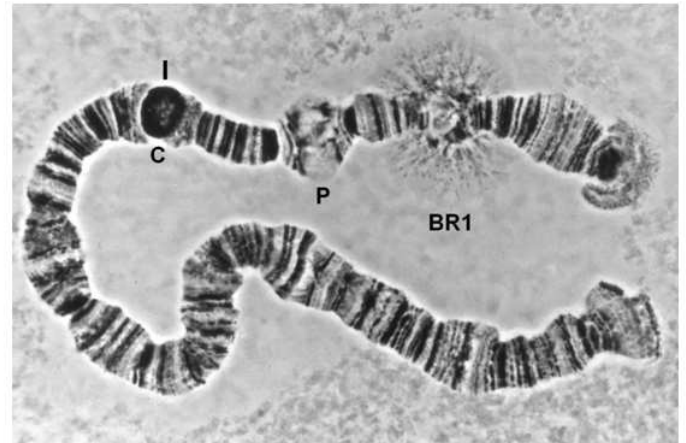
Gallery of Chromosomes

Information about the images

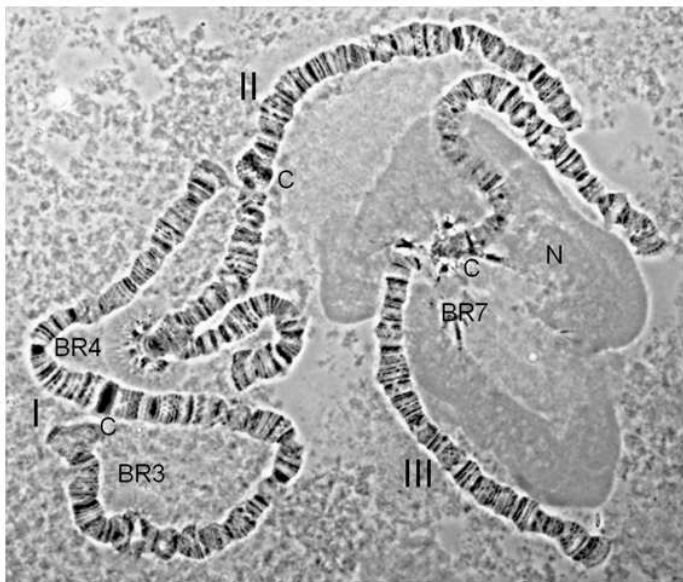
Polytene chromosomes



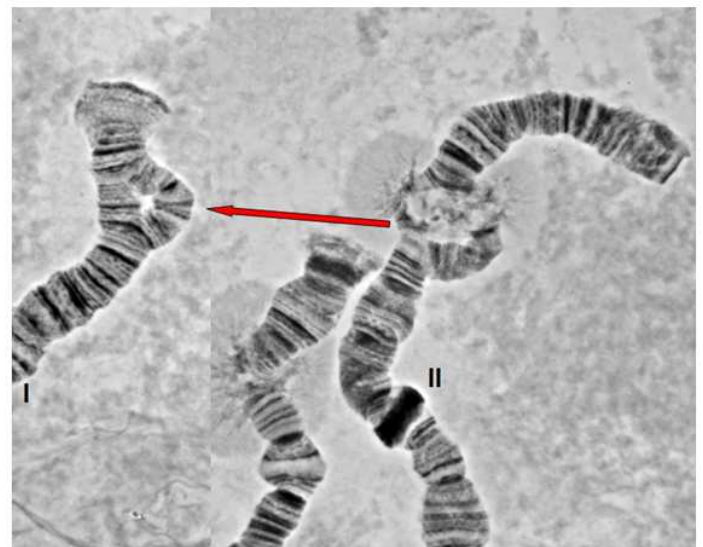
Polytene chromosome set of a main lobe cell of the larval salivary gland of *Acricotopus lucidus* (Diptera, Chironomidae). Aceto-carmine and orcein staining. Phase contrast. I-III, chromosome I-III; BR, Balbiani Ring; C, centromeric region; N, nucleolus



Polytene chromosome I of a main lobe cell of the larval salivary gland of *Acricotopus lucidus* (Diptera, Chironomidae). BR, Balbiani Ring; C, centromeric region; P, puff.



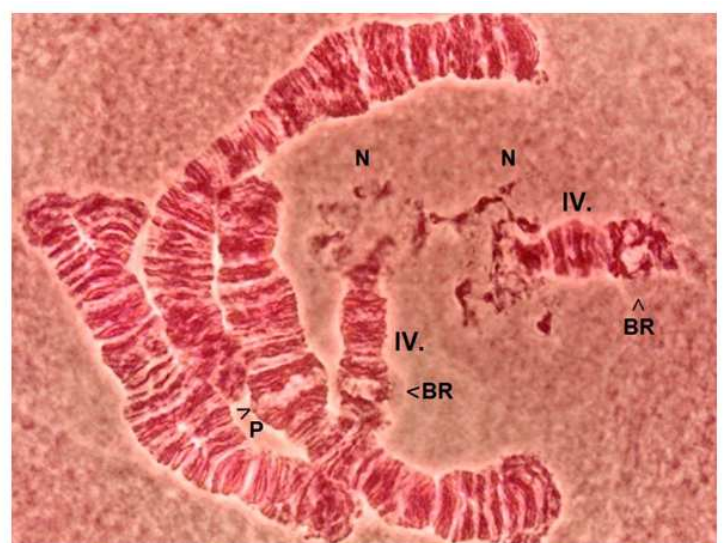
Polytene chromosome set of a anterior lobe cell of the larval salivary gland of *Acricotopus lucidus* (Diptera, Chironomidae). Phase contrast. I-III, chromosome I-III; BR, Balbiani Ring; C, centromeric region; N, nucleolus.



Chromosome mutation: X-ray induced Translocation, transposition, of a section of chromosome II into chromosome I (arrow) of *Acricotopus lucidus* (Diptera, Chironomidae). Polytene chromosomes from a larval salivary gland cell.

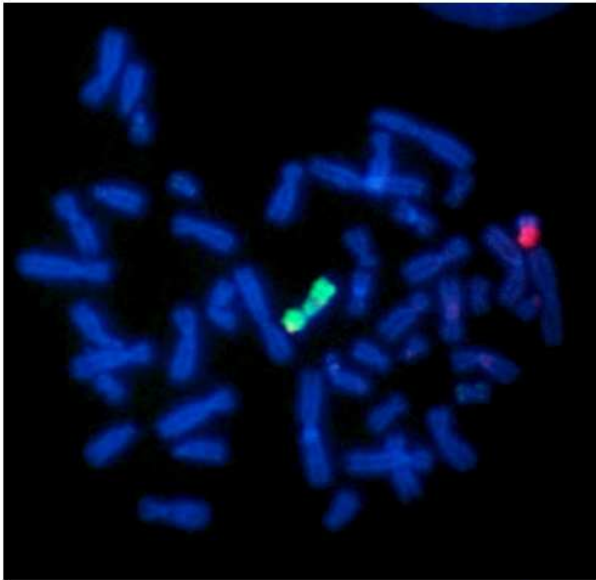


Nucleus of a living salivary gland cell of a larva of *Chironomus riparius* (Diptera, Chironomidae). The smallest of the four polytene chromosomes (no. IV) displays the nucleolus (N). Differential interference contrast (DIC).

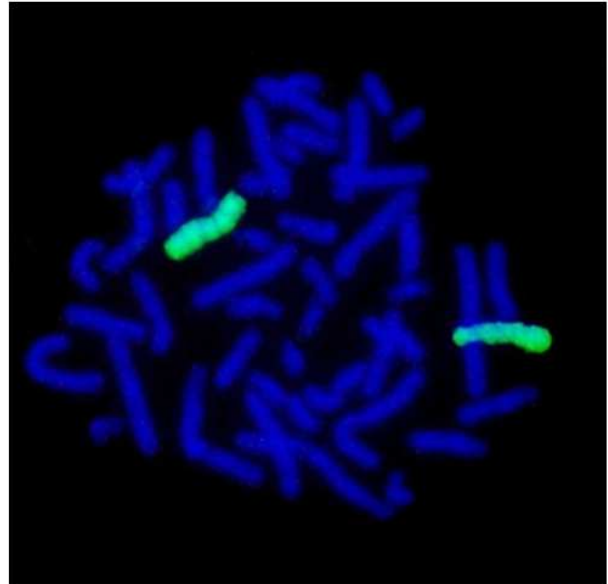


Polytene chromosome set of a larval salivary gland cell of *Chironomus plumosus* (Diptera, Chironomidae). Aceto-carmine and orcein staining. The fourth chromosomes (IV.) are separated by the expression of the nucleolus. BR, Balbiani Ring; N, nucleolus; P, puff.

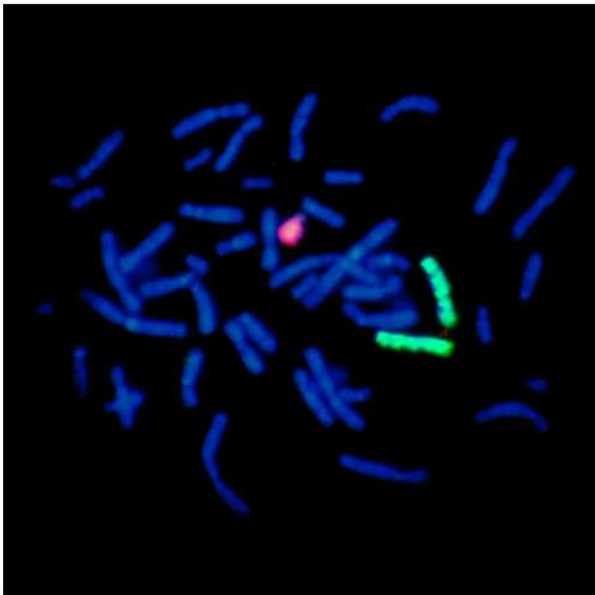
Human chromosomes



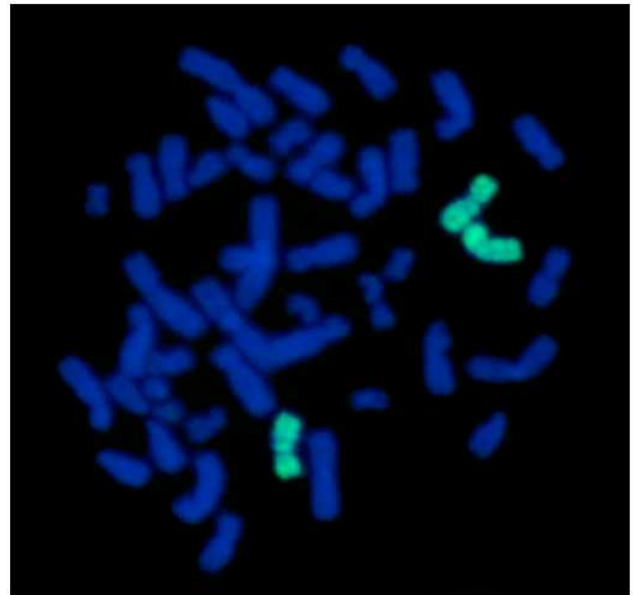
Chromosome painting, metaphase of a male, 46,XY; X and Y painting probes. Chromosomes are stained with DAPI.



Chromosome painting, metaphase of a female, 46,XX; X and Y painting probes. Chromosomes are stained with DAPI.



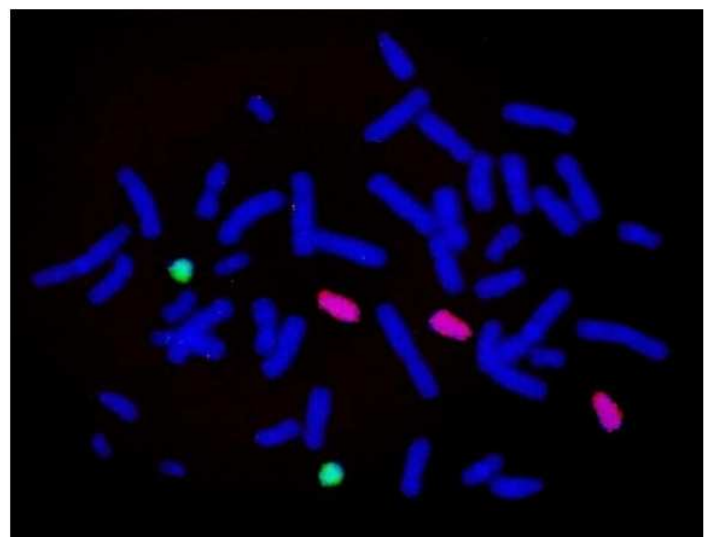
Chromosome painting, metaphase of a male with Klinefelter syndrome, 47,XXY; X and Y painting probes. Chromosomes are stained with DAPI.



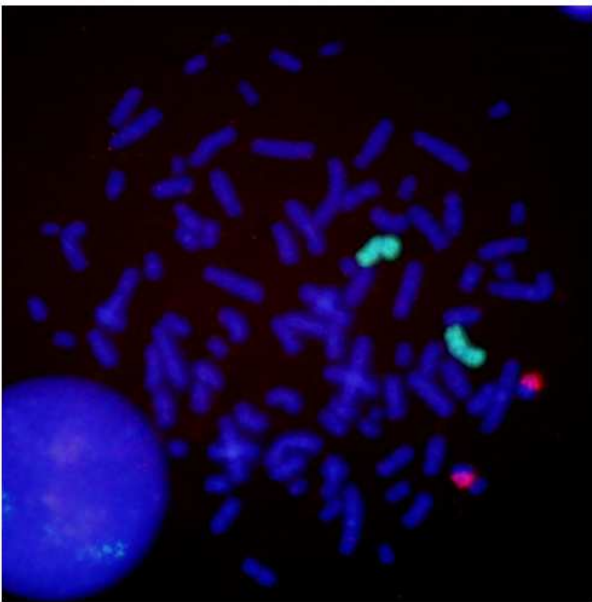
Chromosome painting, metaphase of a female with triple X syndrome, 47,XXX; X and Y-painting probes. Chromosomes are stained with DAPI.



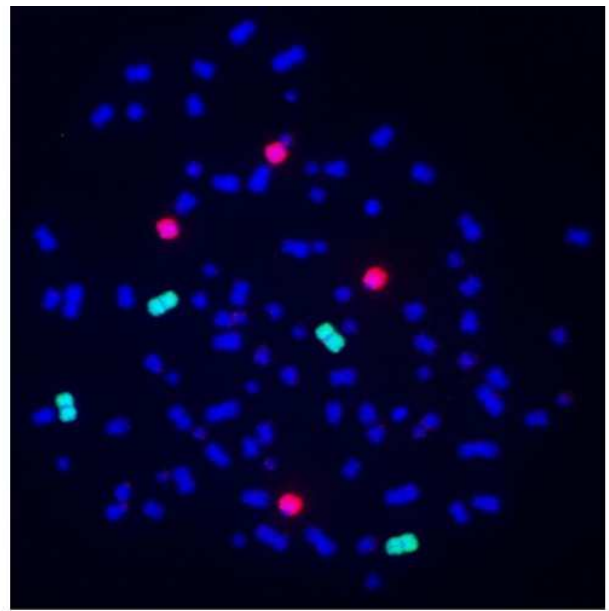
Chromosome painting, metaphase of a male with Down syndrome, trisomie 21, 47,XY+21; 18 21-painting probes. Chromosomes are stained with DAPI .



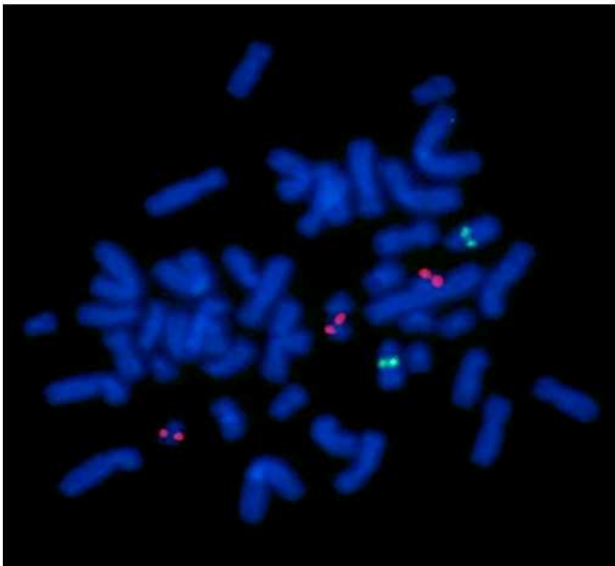
Chromosome painting, metaphase of a male with Edwards syndrome, trisomie 18, 47,XY+18; 18 21-painting probes. Chromosomes are stained with DAPI.



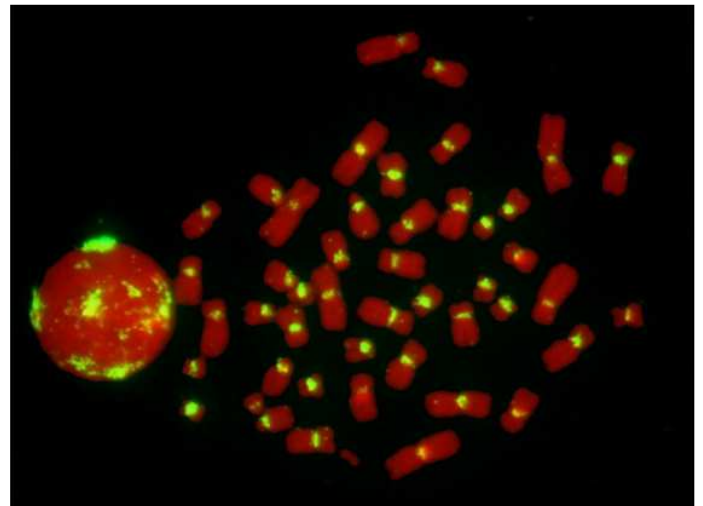
Chromosome painting, metaphase of the hypertetraploid human cell line Molt 4; X Y-painting probes. Chromosomes are stained with DAPI.



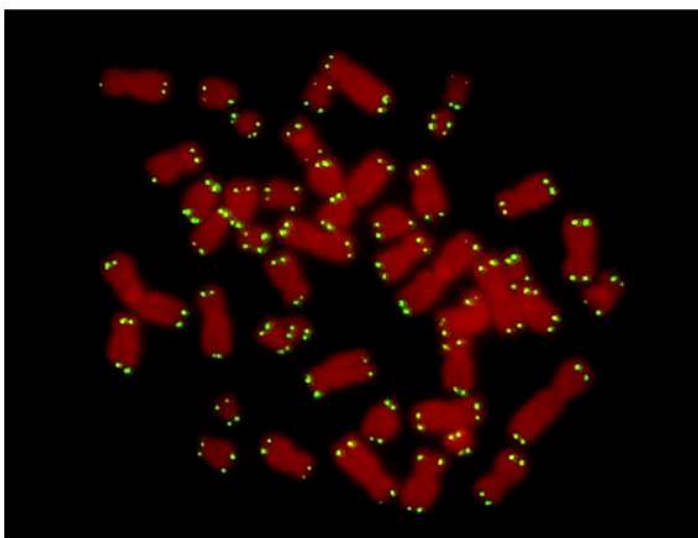
Chromosome painting, metaphase of the hypertetraploid human cell line Molt 4; 3 15-painting probes. Chromosomes are stained with DAPI .



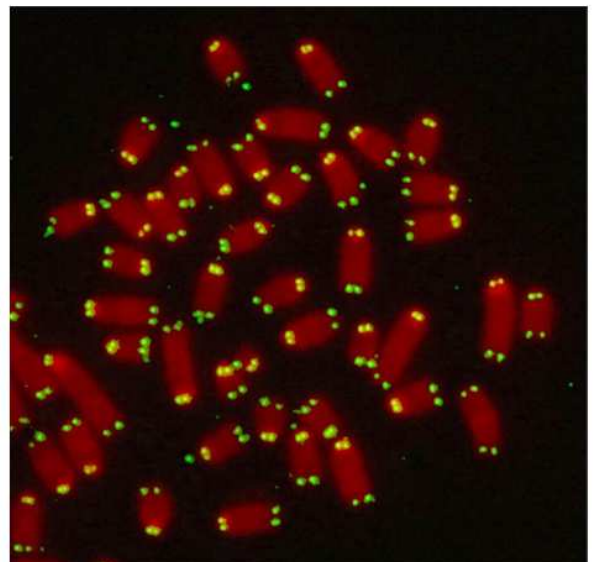
Metaphase of a male with Down syndrome, trisomy 21, 47,XY+21; FISH with locus-specific 13 21 DNA probes. Chromosomes are stained with DAPI.



Centromeres. Metaphase and nucleus (left) of a female, 46,XX; FISH with an alpha-satellite DNA probe (yellow). Chromosomes are stained with DAPI (pseudocoloured red).

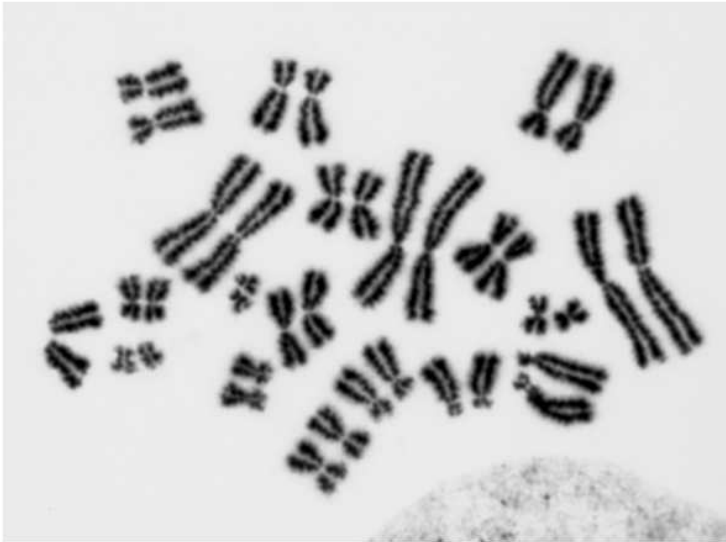


Telomeres, human metaphase, lymphocyte. FISH with a (TTAGGG)n repeat probe (yellow). Fluorescein. Chromosomes are stained with DAPI (pseudocoloured red).

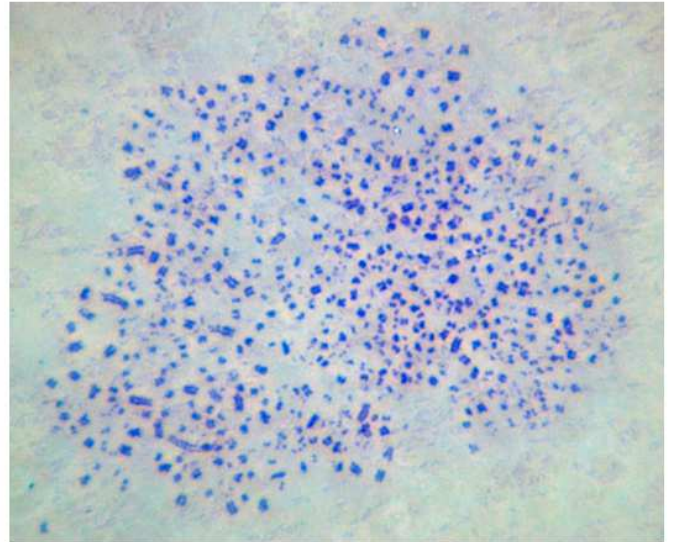


Telomeres, metaphase of the mouse cell line L1210. FISH with a (TTAGGG)n repeat probe (yellow). Fluorescein. Chromosomes are stained with DAPI (pseudocoloured red).

More chromosomes



Diplochromosomes. Metaphase of a Chinese hamster ovary (CHO) tissue culture cell.



Metaphase of an Sf21 tissue culture cell with several hundred chromosomes. Sf, *Spodoptera frugiperda* (Lepidoptera).