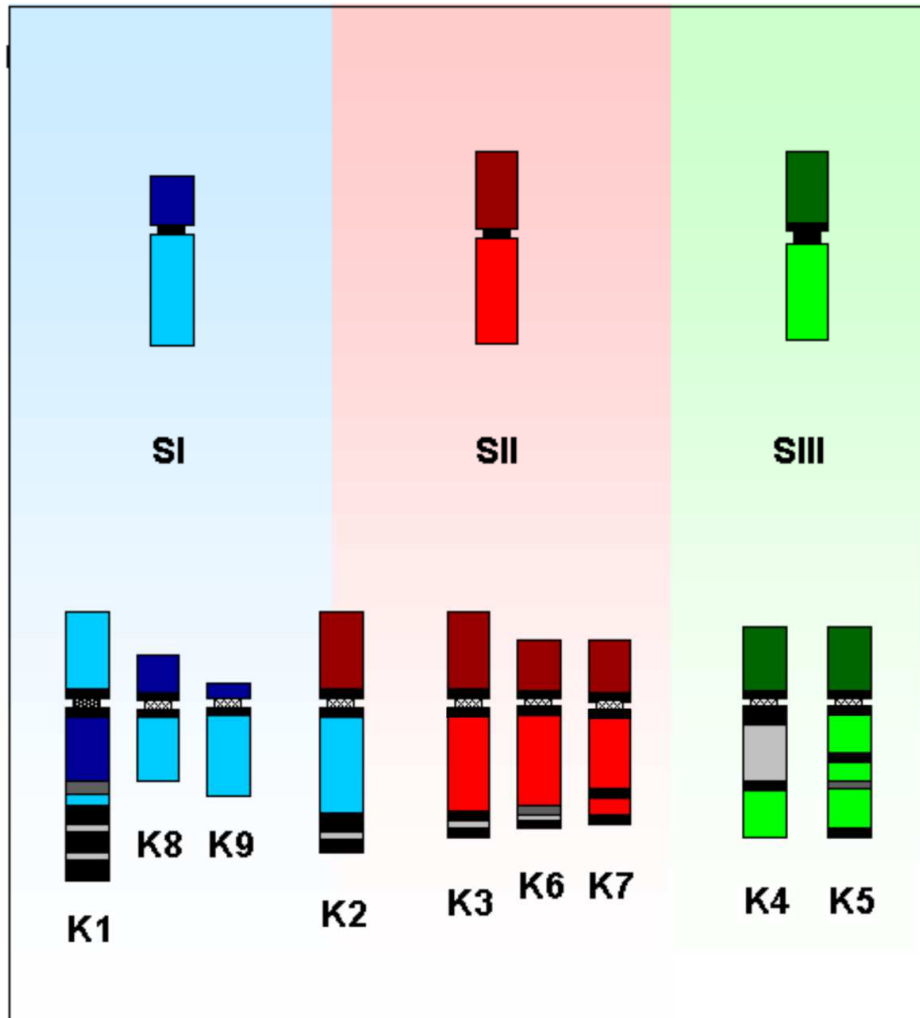


Structural evolution of the germ line-limited chromosomes of *Acricotopus lucidus*



Schematic presentation of the structural evolution of the nine germ line-limited chromosomes (K1-K9) of *Acricotopus lucidus* based on the painting results with whole chromosome and chromosome arm-specific probes of the three somatic chromosomes (SI-SIII). Heterochromatic sections in black (Wolfgang Staiber, Silke Wahl).